

952 W Fairbanks Ave

1006 W Fairbanks Ave

1008 W Fairbanks Ave



RETAIL/SHOWROOM FOR LEASE IN WINTER PARK

952,1006 &1008 W Fairbanks Ave, Winter Park, FL 32789

Highly visible retail/showroom space for lease. Available together or separately

PROPERTY HIGHLIGHTS

- **Ample Parking Spaces:** Rare, ample private parking for a standalone Winter Park site.
- **High-Visibility Signage:** Frontage on Fairbanks Ave with 25,500+ daily vehicles (AADT).
- **Strategic Access:** Minutes from I-4 and walking distance to Park Ave dining and retail.
- **Versatile C-3 Zoning:** Ideal for retail, creative office, or a medical showroom.

952 W FAIRBANKS - SHOWROOM SPACE

- **Premium Standalone Building:** 3,750± SF Class A office/showroom with high-end, modern finishes.
- **Modern Layout:** Bright, open-concept first floor plus private second-floor executive suites.

1006 W FAIRBANKS - RETAIL SPACE

- **Highly Visible Retail:** 825± SF retail space fronting Fairbanks Ave.
- **Fully Finished:** Built out space ready to move in
- **Space Options:** Shared interior doorway with 1008 W Fairbanks offering ideal connectivity if suites are combined (1,650± SF)

1008 W FAIRBANKS - RETAIL SPACE

- **Highly Visible Retail:** 825± SF retail space fronting Fairbanks Ave.
- **Build-Out Opportunity:** Suite is currently used for storage offering a new tenant the opportunity to build-out to fit exact needs.
- **Space Options:** Shared interior doorway with 1006 W Fairbanks offering ideal connectivity if suites are combined (1,650± SF)



ASKING RATE:

Contact For Details



AVAILABILITY:

952 W Fairbanks: 3,750± SF

1006 W Fairbanks: 825± SF

1008 W Fairbanks: 825± SF

1006 + 1008: 1,650± SF

COMBINED TOTAL: 5,400± SF



ZONING:

WP C-3



YEAR BUILT:

2016/1954



HARBERT
REALTY SERVICES

DAMIEN MADSEN

dmdasen@harbertrealty.com | 407.256.2844

JOSH SMITH, SIOR

jsmith@harbertrealty.com | 407.739.8602

For More Information: HarbertRealty.com

400 S Park Ave, Suite 225, Winter Park, FL 32789

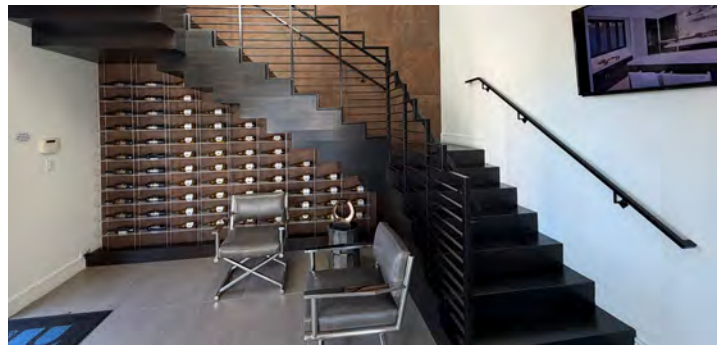
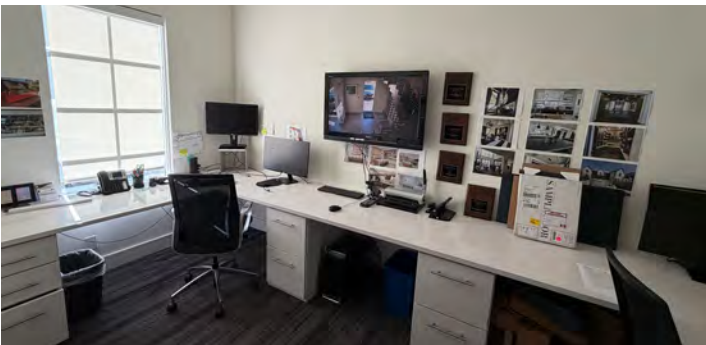
The information contained herein has been obtained from sources deemed reliable, however, HRS makes no guarantees, warranties or representation as to its completeness or accuracy thereof. The presentation of this property is submitted subject to errors, omissions, change of price or conditions, prior to sale or lease or withdrawal without notice.

RETAIL/SHOWROOM FOR LEASE IN WINTER PARK

952, 1006 & 1008 W Fairbanks Ave, Winter Park, FL 32789

PHOTOS

952 W FAIRBANKS AVE



DAMIEN MADSEN
dmadsen@harbertrealty.com | 407.256.2844

JOSH SMITH, SIOR
jsmith@harbertrealty.com | 407.739.8602

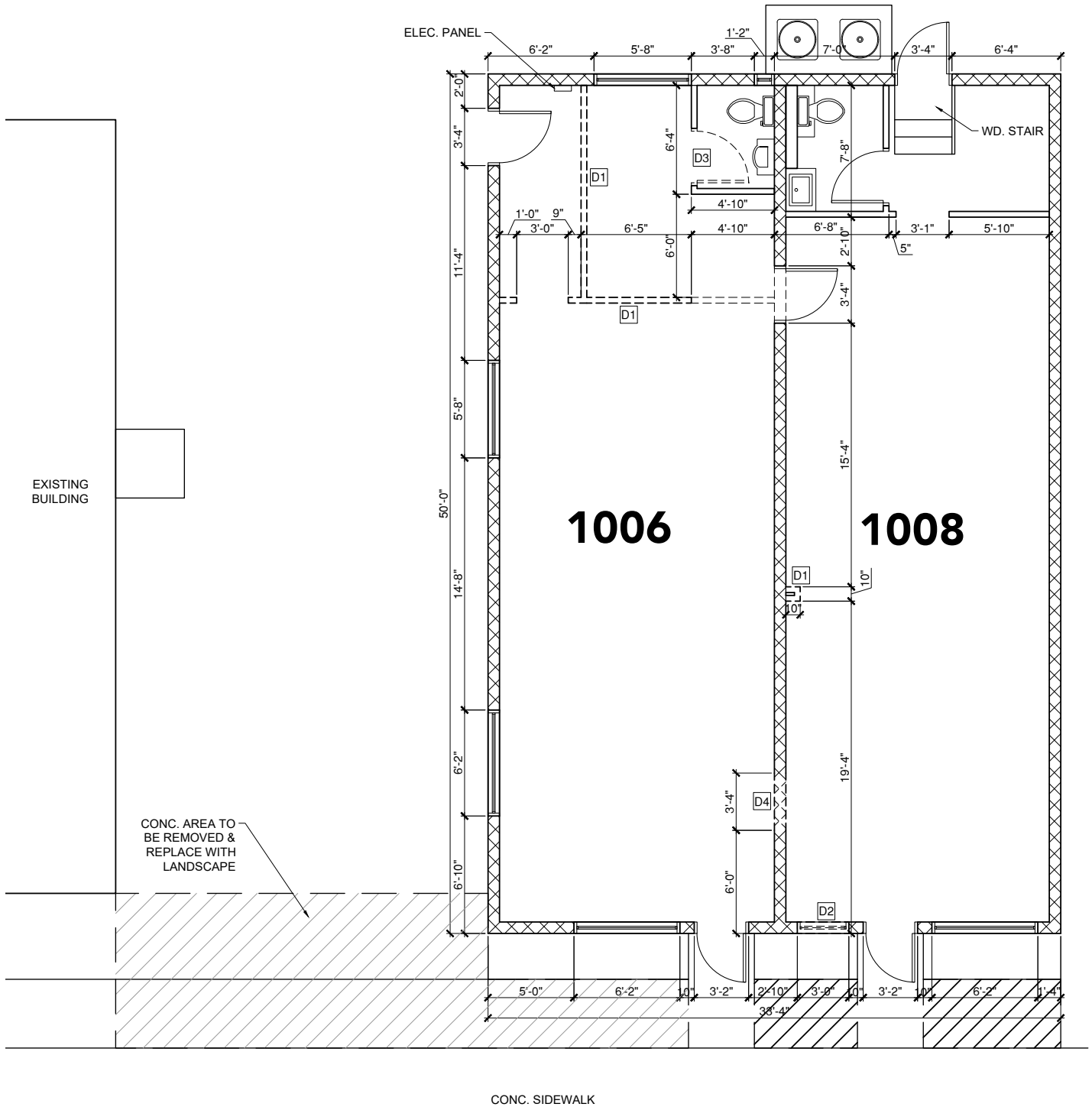
For More Information: HarbertRealty.com
400 S Park Ave, Suite 225, Winter Park, FL 32789

RETAIL/SHOWROOM FOR LEASE IN WINTER PARK

952,1006 &1008 W Fairbanks Ave, Winter Park, FL 32789

FLOOR PLAN

1006-1008 W FAIRBANKS AVE



DAMIEN MADSEN
dmadsen@harbertrealty.com | 407.256.2844

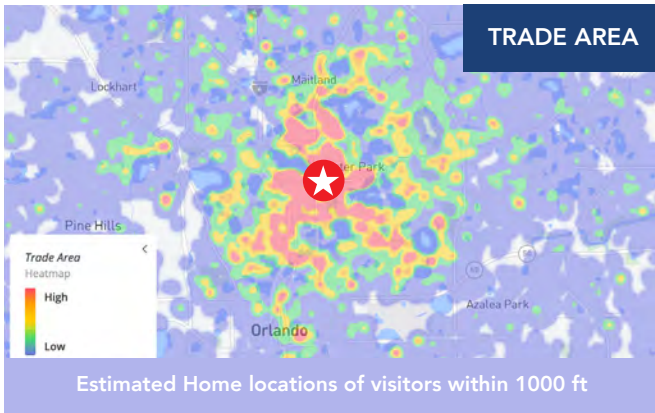
JOSH SMITH, SIOR
jsmith@harbertrealty.com | 407.739.8602

For More Information: HarbertRealty.com
400 S Park Ave, Suite 225, Winter Park, FL 32789

RETAIL/SHOWROOM FOR LEASE IN WINTER PARK

952,1006 & 1008 W Fairbanks Ave, Winter Park, FL 32789

AREA OVERVIEW



12 MONTH FOOT TRAFFIC DEMOGRAPHICS WITHIN 1000 FT

Visits	902K
Visitors	306.5K
Visit Frequency	2.94x
Avg Dwell Time	56 minutes
Visitor Income	\$70K Median HH Income

POPULATION

1 Mile	3 Miles	5 Miles
11,099	96,945	297,307

EMPLOYEES

1 Mile	3 Miles	5 Miles
26,343	94,248	254,239

AVG HH INCOME

1 Mile	3 Miles	5 Miles
\$155,052	\$169,824	\$122,251



DAMIEN MADSEN
dmadsen@harbertrealty.com | 407.256.2844

JOSH SMITH, SIOR
jsmith@harbertrealty.com | 407.739.8602

For More Information: HarbertRealty.com
400 S Park Ave, Suite 225, Winter Park, FL 32789