



# OFFICE CONDOS FOR SALE OR FOR LEASE

807 W Morse Blvd, Winter Park, FL 32789

Prominent two-story office building located in Winter Park's desirable downtown core

## PROPERTY HIGHLIGHTS

- May be leased or purchased; together or separately
- Iconic presence inside the core of Winter Park's downtown area
- Excellent surface parking in a market with limited parking opportunities
- Well managed and maintained
- Well suited for the long-term investor seeking rent growth and a Winter Park address
- Potential for owner/user occupant



### ASKING PRICE:

Contact broker for details



### SQUARE FOOTAGE:

Unit 1: 7,011 ± RSF

Unit 169: 6,893 ± RSF

Unit 339-507: 8,653 ± RSF

**Total Available: 22,557 ± RSF**



### PARKING:

100± surface spaces



### ZONING:

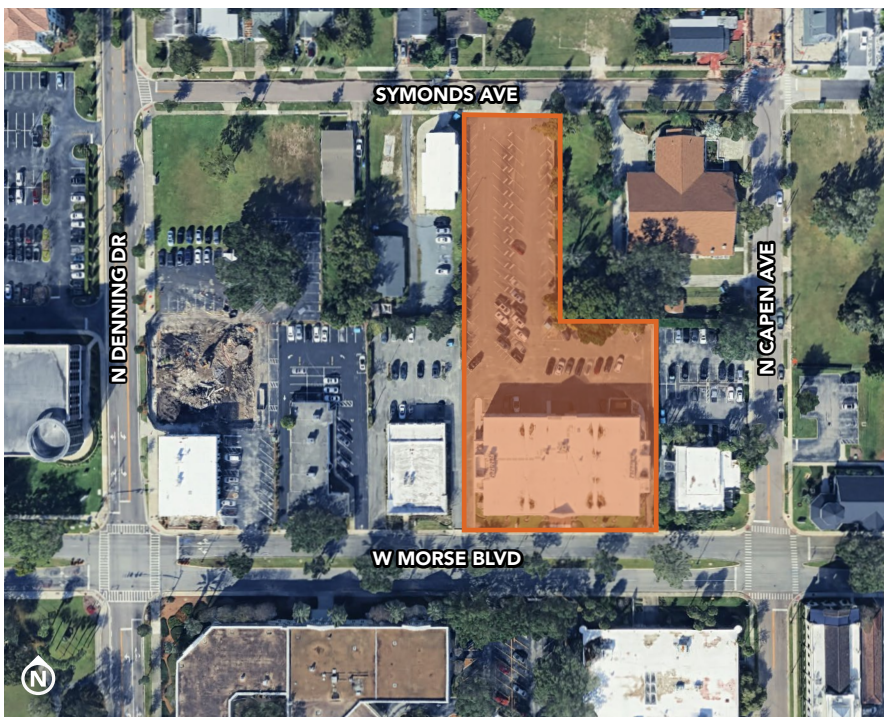
Office-1



### LOCATION:

Close proximity to abundant surrounding dining and retail

Convenient access to I-4



**HARBERT**  
REALTY SERVICES

**DAMIEN MADSEN**

dmdasen@harbertrealty.com | 407.256.2844

**JOSH SMITH**

jsmith@harbertrealty.com | 407.377.4050

**For More Information: HarbertRealty.com**

400 S Park Ave, Suite 225, Winter Park, FL 32789

The information contained herein has been obtained from sources deemed reliable, however, HRS makes no guarantees, warranties or representation as to its completeness or accuracy thereof. The presentation of this property is submitted subject to errors, omissions, change of price or conditions, prior to sale or lease or withdrawal without notice.

# OFFICE CONDOS FOR SALE OR FOR LEASE

807 W Morse Blvd, Winter Park, FL 32789

## Location Overview



AVG HH INCOME		
1 Mile	3 Miles	5 Miles
\$159,959	\$167,798	\$122,025

POPULATION		
1 Mile	3 Miles	5 Miles
11,887	94,891	299,332

EMPLOYEES		
1 Mile	3 Miles	5 Miles
26,559	85,269	249,654



**DAMIEN MADSEN**  
dmadsen@harbertrealty.com | 407.256.2844

**JOSH SMITH**  
jsmith@harbertrealty.com | 407.377.4050

**For More Information: HarbertRealty.com**  
400 S Park Ave, Suite 225, Winter Park, FL 32789

# OFFICE CONDOS FOR SALE OR FOR LEASE

807 W Morse Blvd, Winter Park, FL 32789

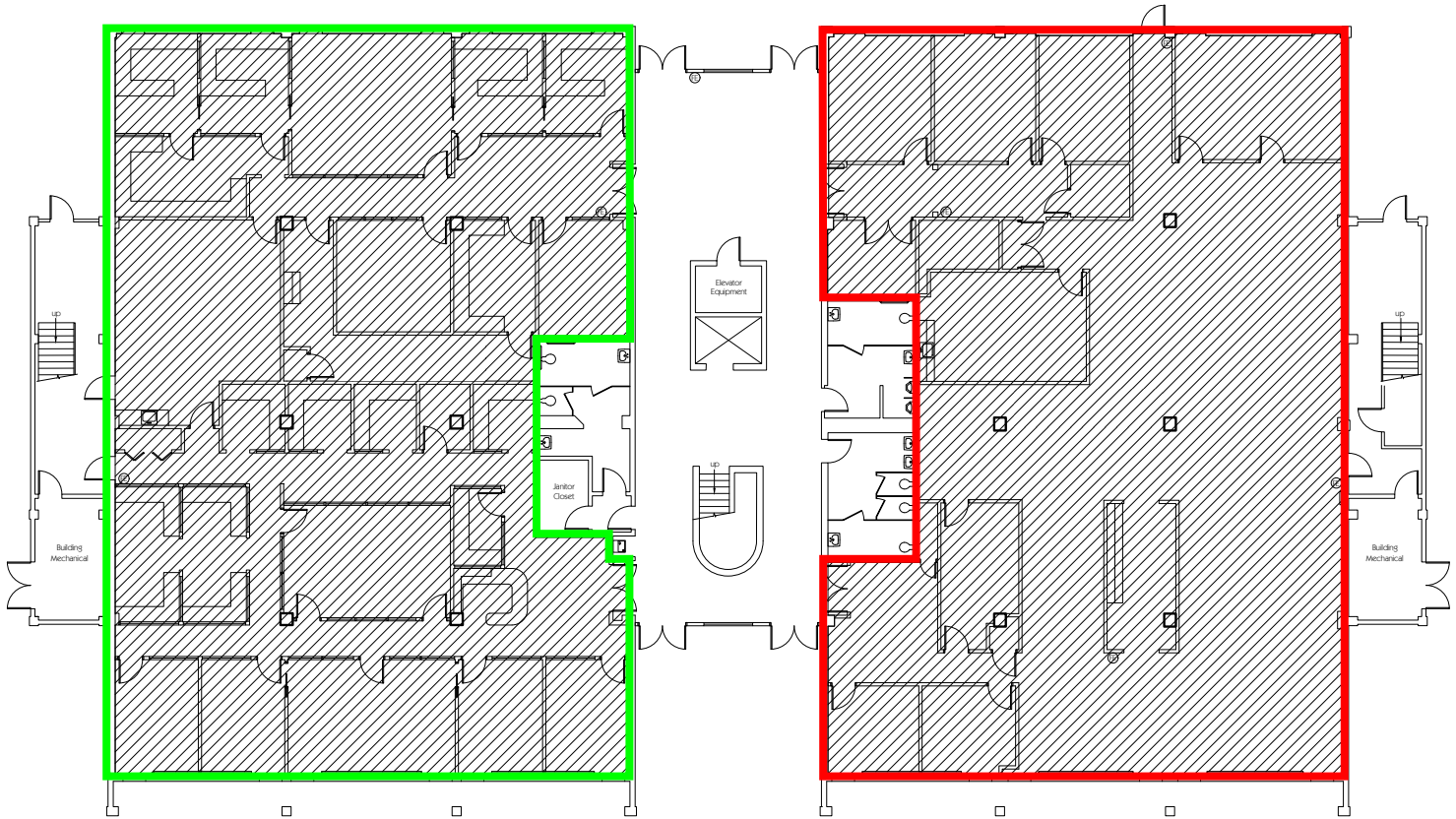
Floor Plan

## First Floor

\*May be sold or leased; together or separately

**Unit 1: ± 7,011 RSF**

**Unit 169: ± 6,893 RSF**



(Owner occupied, but willing to lease back or vacate)

(Vacant)



**HARBERT**  
REALTY SERVICES

**DAMIEN MADSEN**

[dmdasen@harbertrealty.com](mailto:dmdasen@harbertrealty.com) | 407.256.2844

**JOSH SMITH**

[jsmith@harbertrealty.com](mailto:jsmith@harbertrealty.com) | 407.377.4050

*For More Information: [HarbertRealty.com](http://HarbertRealty.com)*

400 S Park Ave, Suite 225, Winter Park, FL 32789

# OFFICE CONDOS FOR SALE OR FOR LEASE

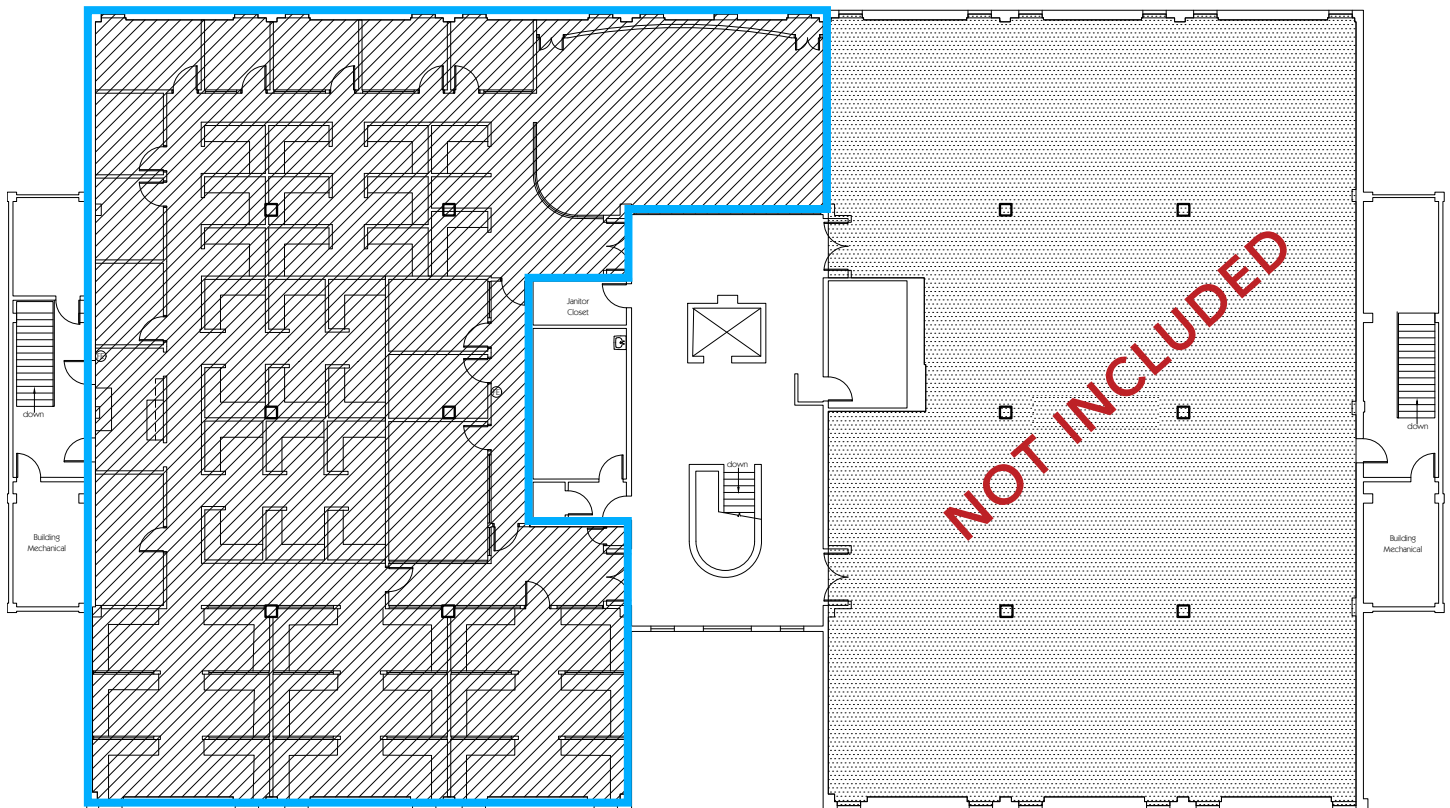
807 W Morse Blvd, Winter Park, FL 32789

Floor Plan

## Second Floor

\*May be sold or leased; together or separately

Unit 339-507: ± 8,653 RSF



(Vacant)



HARBERT  
REALTY SERVICES

DAMIEN MADSEN

dmadsen@harbertrealty.com | 407.256.2844

JOSH SMITH

jsmith@harbertrealty.com | 407.377.4050

For More Information: [HarbertRealty.com](http://HarbertRealty.com)

400 S Park Ave, Suite 225, Winter Park, FL 32789