



## 30,000± SF CLASS "A" OFFICE & RETAIL FOR LEASE

1100 N Orange Ave, Winter Park, FL 32789

AVAILABLE Q4 2025

Only 30% remains  
available to lease

### PROPERTY HIGHLIGHTS

- Class A design and finishes throughout
- Shell Delivery before end of the year
- Over 68% of the project pre-leased
- First floor retail and second floor office space remain available
- Exceptional parking ratio for downtown Winter Park
- Prominently located on the Orange Avenue Gateway into historic downtown Winter Park
- Adjacent to Seven Oaks Park with direct balcony visibility to the park



#### ASKING RATE:

Contact broker for details



#### SQUARE FOOTAGE:

30,000± rsf



#### TOTAL LAND AREA:

1.88±



#### PARKING:

102 surface spaces



#### ZONING:

O-1



#### YEAR BUILT:

Q4 2025



Developed & Managed by:



Marketing & Leasing by:



DAMIEN MADSEN

dmdansen@harbertrealty.com | 407.256.2844

JOSH SMITH, SIOR

jsmith@harbertrealty.com | 407.739.8602

For More Information: [HarbertRealty.com](http://HarbertRealty.com)

400 S Park Ave, Suite 225, Winter Park, FL 32789



# CLASS "A" OFFICE & RETAIL FOR LEASE

1100 N Orange Ave, Winter Park, FL 32789

## SITE PLAN



**HARBERT**  
REALTY SERVICES

Marketing & Leasing by:

**DAMIEN MADSEN**  
dmadsen@harbertrealty.com  
407.256.2844

**JOSH SMITH, SIOR**  
jsmith@harbertrealty.com  
407.739.8602

*For More Information: HarbertRealty.com*  
400 S Park Ave, Suite 225, Winter Park, FL 32789

**McCRANEY**  
PROPERTY COMPANY  
AN ENVIRONMENT TO GROW

Developed & Managed by:



# CLASS "A" OFFICE & RETAIL FOR LEASE

1100 N Orange Ave, Winter Park, FL 32789

## PROGRESS PHOTOS



MARCH 2025



APRIL 2025



MAY 2025



JUNE 2025



JULY 2025



AUGUST 2025



SEPTEMBER 2025



**HARBERT**  
REALTY SERVICES

Marketing & Leasing by:

**DAMIEN MADSEN**  
dmadsen@harbertrealty.com  
407.256.2844

**JOSH SMITH, SIOR**  
jsmith@harbertrealty.com  
407.739.8602

*For More Information: HarbertRealty.com*  
400 S Park Ave, Suite 225, Winter Park, FL 32789



Developed & Managed by:

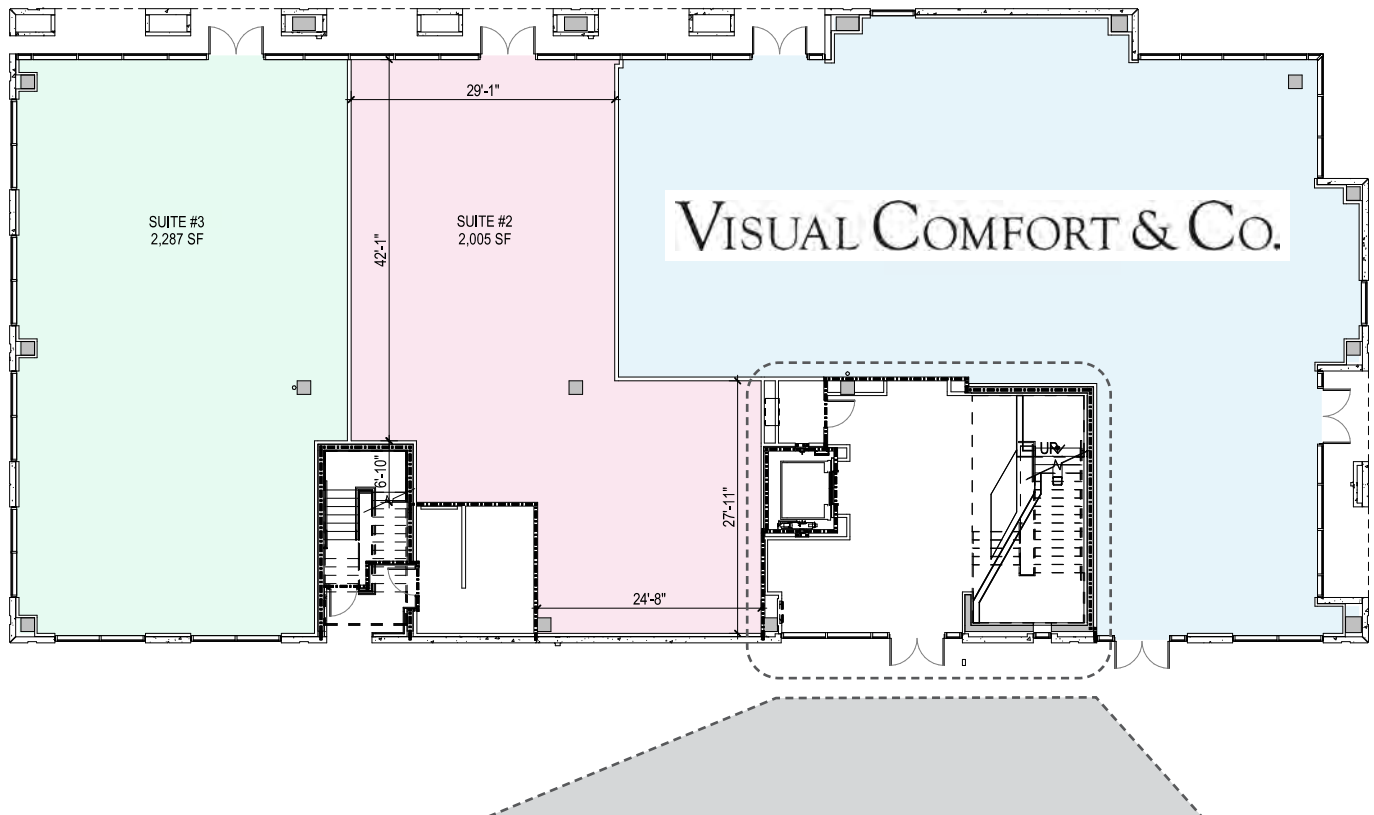


# CLASS "A" OFFICE & RETAIL FOR LEASE

1100 N Orange Ave, Winter Park, FL 32789

FIRST FLOOR RETAIL

**Available:  
2,005–4,292 ± rsf**



LOBBY FINISH RENDERINGS



**HARBERT**  
REALTY SERVICES

Marketing & Leasing by:

**DAMIEN MADSEN**

dmdasen@harbertrealty.com  
407.256.2844

**JOSH SMITH, SIOR**

jsmith@harbertrealty.com  
407.739.8602

*For More Information: HarbertRealty.com*  
400 S Park Ave, Suite 225, Winter Park, FL 32789



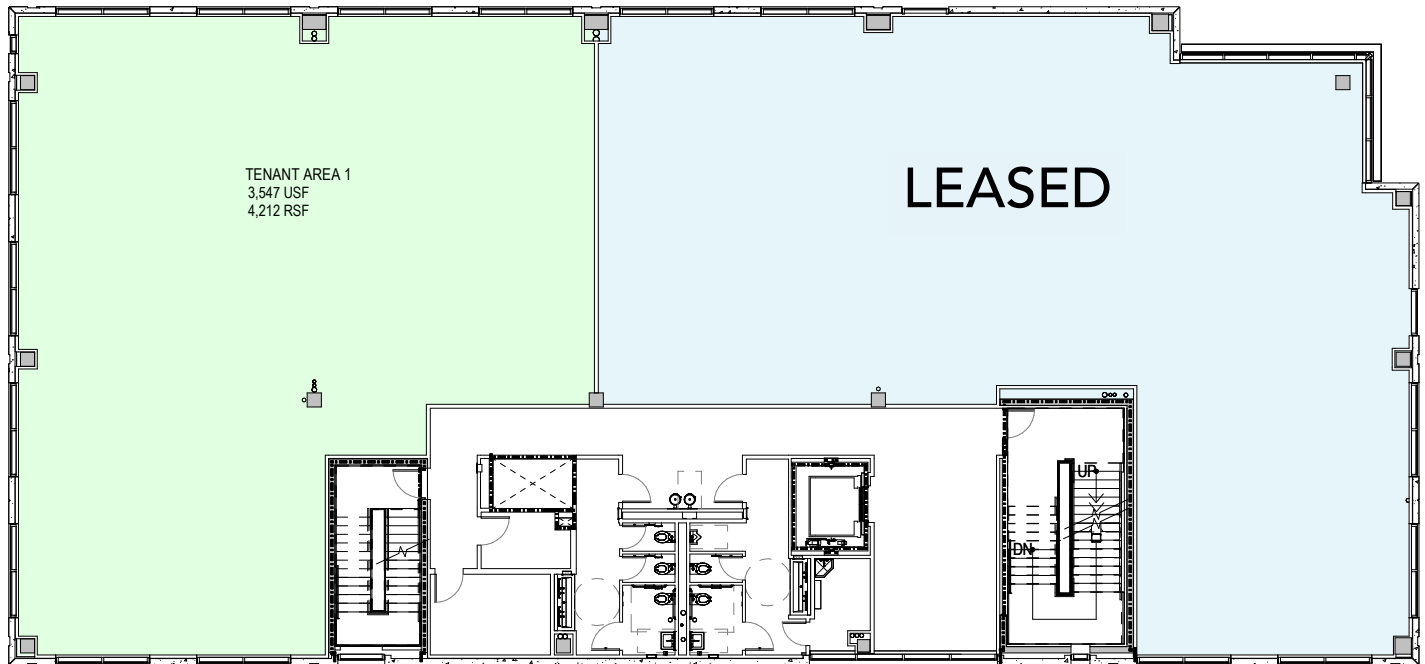
Developed & Managed by:

# CLASS "A" OFFICE & RETAIL FOR LEASE

1100 N Orange Ave, Winter Park, FL 32789

SECOND FLOOR  
OFFICE

**Available:**  
**4,212± rsf**



**HARBERT**  
REALTY SERVICES

Marketing & Leasing by:

**DAMIEN MADSEN**

dmadsen@harbertrealty.com  
407.256.2844

**JOSH SMITH, SIOR**

jsmith@harbertrealty.com  
407.739.8602

*For More Information: [HarbertRealty.com](http://HarbertRealty.com)*

400 S Park Ave, Suite 225, Winter Park, FL 32789



Developed & Managed by:



# CLASS "A" OFFICE & RETAIL FOR LEASE

1100 N Orange Ave, Winter Park, FL 32789

## AREA OVERVIEW



### DRIVE TIMES

- 2 minutes**  
to Park Avenue
- 6 minutes**  
to Interstate 4
- 11 minutes**  
to Downtown Orlando
- 14 minutes**  
to Orlando Executive Airport
- 31 minutes**  
to Orlando International Airport



**HARBERT**  
REALTY SERVICES

Marketing & Leasing by:

**DAMIEN MADSEN**  
dmadsen@harbertrealty.com  
407.256.2844

**JOSH SMITH, SIOR**  
jsmith@harbertrealty.com  
407.739.8602

*For More Information: HarbertRealty.com*  
400 S Park Ave, Suite 225, Winter Park, FL 32789



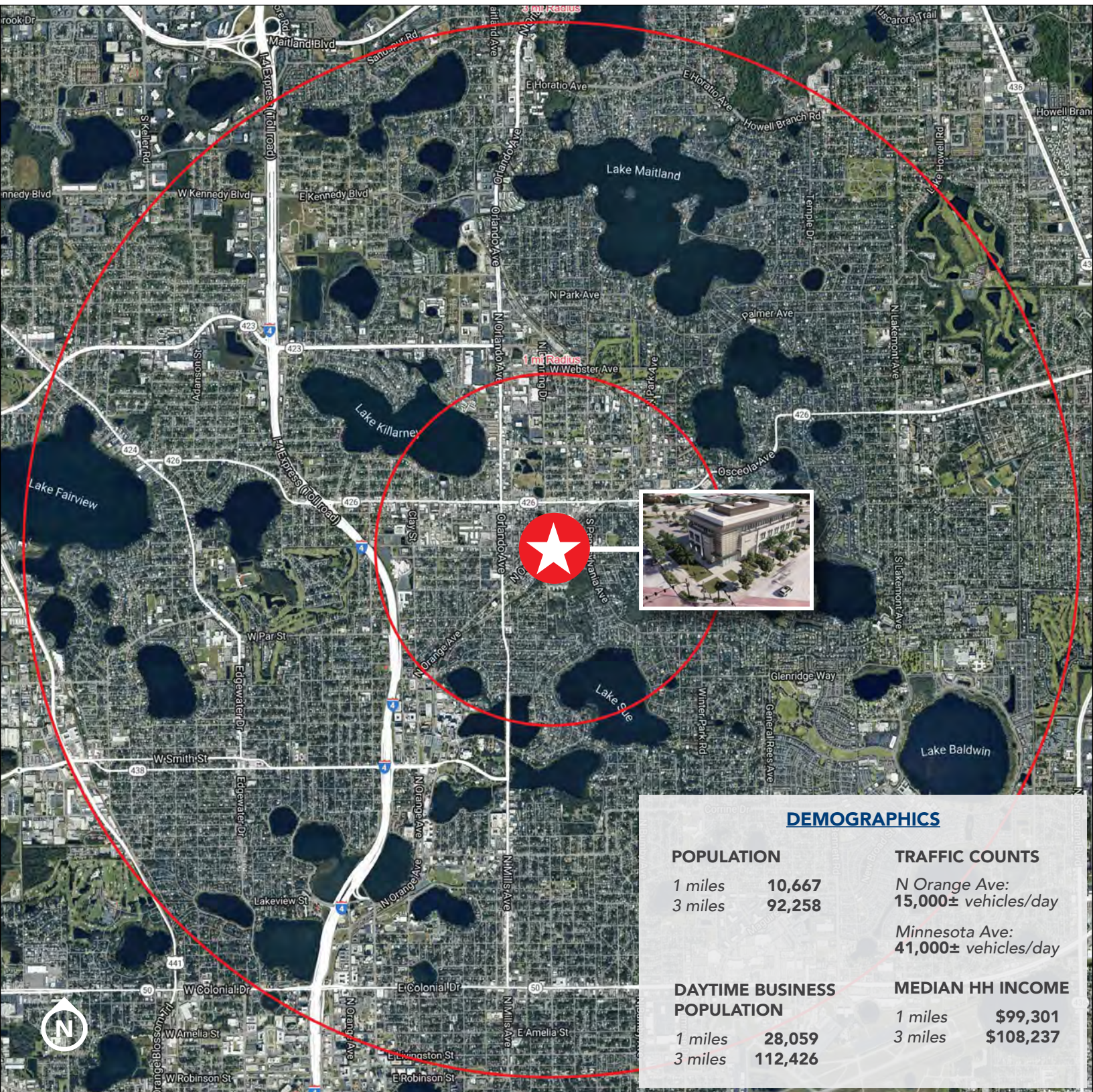
Developed & Managed by:



# CLASS "A" OFFICE & RETAIL FOR LEASE

1100 N Orange Ave, Winter Park, FL 32789

## DEMOGRAPHICS



**HARBERT**  
REALTY SERVICES

Marketing & Leasing by:

**DAMIEN MADSEN**

dmdasen@harbertrealty.com  
407.256.2844

**JOSH SMITH, SIOR**

jsmith@harbertrealty.com  
407.739.8602

*For More Information: HarbertRealty.com*

400 S Park Ave, Suite 225, Winter Park, FL 32789



Developed & Managed by: